

THE BRIGHT REPORT

A periodical brought to you by Bright Wealth Management

BRIGHT
WEALTH MANAGEMENT

4400 State Hwy 121, Ste 400
Lewisville, TX 75056
972-410-6623
jewell.page@brightwealthmanagement.com
www.brightwealthmanagement.com

2nd Quarter 2023

What you get with the team at Bright Wealth Management is a group of diverse and highly trained financial advisors all focused on one thing: You. If you would like to learn more about Bright Wealth Management and how we work with our clients, please give us a call or send an email. We would welcome the opportunity to work with you.



55 Million

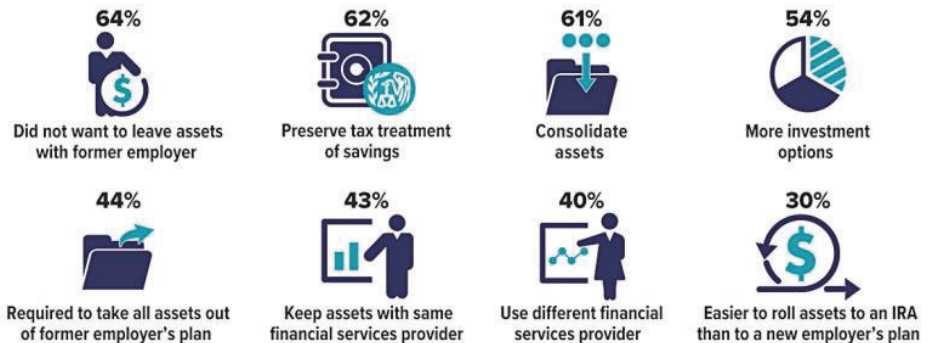
Number of U.S. households with an IRA in 2022. Some households have more than one type of IRA: 40.9 million have a traditional IRA, 32.3 million have a Roth IRA, and 4.9 million have a SEP IRA, SAR-SEP IRA, or SIMPLE IRA.

Source: Investment Company Institute, 2023

Reasons to Roll

When you leave your job or retire, you have an opportunity to manage your funds in an employer-sponsored retirement plan such as a 401(k), 403(b), or government 457(b) plan. Depending on the situation, you generally have four options.* The approach that typically gives you the most control over the funds is to transfer some or all of the assets to an IRA through a rollover.

Three out of five households who owned traditional IRAs in 2022 had executed at least one IRA rollover from an employer-sponsored retirement plan. These were the top reasons for the most recent rollover.



*Other options may include leaving assets in the former employer's plan, transferring assets to a new employer-sponsored plan, or withdrawing the money.

Source: Investment Company Institute, 2023 (multiple responses allowed)

A Mortgage Recast Is an Alternative to Refinancing

If you would like to reduce your monthly mortgage payment without having to refinance, then you may want to explore a mortgage recast. When you recast your mortgage, you put money toward the principal balance of your current home loan. Your mortgage lender then recalculates (reamortizes) your loan based on your new, lower balance, which reduces your monthly payment. Your interest rate and the number of years remaining on your loan stay the same. Here are three scenarios where a mortgage recast might be especially appealing.

- You have extra cash on hand, perhaps from a bonus or an inheritance. It's sitting in a low-yield account.
- You are close to retirement or retired. You want to keep your home but lower your monthly expenses.
- You bought a new home with a smaller down payment than you intended because your old home is still on the market. But once your old home sells, the proceeds can be applied to your new mortgage through a recast.

Refinancing your mortgage may be a better option if your goal is to pay off your loan faster by shortening the term, or if you want to lower your interest rate or obtain cash. But if your objective is simply to lower your monthly payment and save on interest charges, then recasting your mortgage may be appropriate.

Recasting is generally simpler and less expensive than refinancing because you're keeping the same mortgage instead of applying for a new one. It doesn't require an extensive application, a credit check, a new appraisal, or closing costs, though you typically will need to pay a processing fee.

Check with Your Lender

Not all mortgage lenders offer recasts, and some types of loans, including FHA, VA, USDA, and certain jumbo loans are not eligible for recasting. If you do qualify for a recast, your lender will give you more details about the process.

You may be able to recast once you've increased your equity by making extra payments or by paying a lump sum toward your mortgage balance. Minimums vary, but the additional principal required may be as little as \$5,000. Of course, the more you put toward your principal, the lower your future monthly mortgage payment. If you are currently paying principal mortgage insurance (PMI), putting a lump sum toward your mortgage may help erase that, further lowering your monthly payment.

One drawback of a mortgage recast is that it could tie up money you might need later for other purposes. To access your equity in the future, you may need to refinance, take out a home equity loan, or even sell your home.

How Taxes Impact Your Retirement-Income Strategy

Retirees face several unique challenges when managing their income, particularly when it comes to taxes. From understanding how taxes relate to Social Security and Medicare to determining when to tap taxable and tax-advantaged accounts, individuals must juggle a complicated mix of factors.

Social Security and Medicare

People are sometimes surprised to learn that a portion of Social Security income becomes federally taxable when combined income exceeds \$25,000 for single taxpayers and \$32,000 for married couples filing jointly. The taxable portion is up to 85% of benefits, depending on income and filing status.¹

In addition, the amount retirees pay in Medicare premiums each year is based on the modified adjusted gross income (MAGI) from two years earlier. In other words, the cost retirees pay for Medicare in 2023 is based on the MAGI reported on their 2021 returns.

Taxable, Tax-Deferred, or Tax-Free?

Maintaining a mix of taxable, tax-deferred, and tax-free accounts offers flexibility in managing income each year. However, determining when and how to tap each type of account and asset can be tricky. Consider the following points:

Taxable accounts. Income from most dividends and fixed-income investments and gains from the sale of securities held 12 months or less are generally taxed at federal rates as high as 37%. By contrast, qualified dividends and gains from the sale of securities held longer than 12 months are generally taxed at lower capital gains rates, which max out at 20%.

Tax-deferred accounts. Distributions from traditional IRAs, traditional work-sponsored plans, and annuities are also generally subject to federal income tax. On the other hand, company stock held in a qualified work-sponsored plan is typically treated differently. Provided certain rules are followed, a portion of the stock's value is generally taxed at the capital gains rate, no matter when it's sold; however, if the stock is rolled into a traditional IRA, it loses this special tax treatment.²

Tax-free accounts. Qualified distributions from Roth accounts and Health Savings Accounts (HSAs) are tax-free and therefore will not affect Social Security taxability and Medicare premiums. Moreover, some types of fixed-income investments offer tax-free income at the federal and/or state levels.³

The Impact of RMDs

One income-management strategy retirees often follow is to tap taxable accounts in the earlier years of retirement in order to allow the other accounts to continue benefiting from tax-deferred growth. However, traditional IRAs and workplace plans cannot

grow indefinitely. Account holders must begin taking minimum distributions after they reach age 73 (for those who reach age 72 after December 31, 2022). Depending on an account's total value, an RMD could bump an individual or couple into a higher tax bracket. (RMDs are not required from Roth IRAs and, beginning in 2024, work-based plan Roth accounts during the primary account holder's lifetime.)

Don't Forget State Taxes

State taxes are also a factor. Currently, seven states impose no income taxes, while New Hampshire taxes dividend and interest income and Washington taxes the capital gains of high earners. Twelve states tax at least a portion of a retiree's Social Security benefits.

Eye on Washington

Finally, both current and future retirees will want to monitor congressional actions over the next few years. That's because today's historically low marginal tax rates are scheduled to revert to higher levels in 2026, unless legislation is enacted (see table).

Help Is Available

Putting together a retirement-income strategy that strives to manage taxes is a complex task indeed. Investors may want to seek the help of a qualified tax or financial professional before making any final decisions.⁴

Tax Rates Scheduled to Rise

Unless legislation is enacted, federal marginal income tax rates are scheduled to rise in 2026.

Current rate	2026
10%	10%
12%	15%
22%	25%
24%	28%
32%	33%
35%	35%
37%	39.6%

1) Combined income is the sum of adjusted gross income, tax-exempt interest, and 50% of any Social Security benefits received.

2) Distributions from tax-deferred accounts and annuities prior to age 59½ are subject to a 10% penalty, unless an exception applies.

3) A qualified distribution from a Roth account is one that is made after the account has been held for at least five years and the account holder reaches age 59½, dies, or becomes disabled. A distribution from an HSA is qualified provided it is used to pay for covered medical expenses (see IRS publication 502). Nonqualified distributions will be subject to regular income taxes and penalties.

4) There is no guarantee that working with a financial professional will improve investment results.

All information provided herein is for informational purposes only and should not be relied upon to make an investment decision. This presentation is neither an offer to sell, nor a solicitation of any offer to buy any securities, investment products, or investment advisory service. The presentation is being furnished on a confidential basis to the recipient. The information herein contains forward looking statements and projections representing the current assumptions and beliefs based on information available to Bright Wealth Management, LLC at time of publishing. This information included is believed to be reasonable, reliable and accurate, (however no representation is made with respect to the accuracy and complete-ness of such data) and is the most recent information available (unless otherwise noted). However, all the information herein, and such beliefs, statements and assumptions are subject to change without notice. All statements made involve risk, uncertainties and are assumptions. Investors may not put undue reliance on any of these statements. There is no guarantee that the market will move in any direction, as there is no way to predict with certainty future market behavior. Due to rapidly changing market conditions and the complexity of investment decisions, supplemental information and other sources may be required to make an informed investment decision based on individual objectives and suitability.